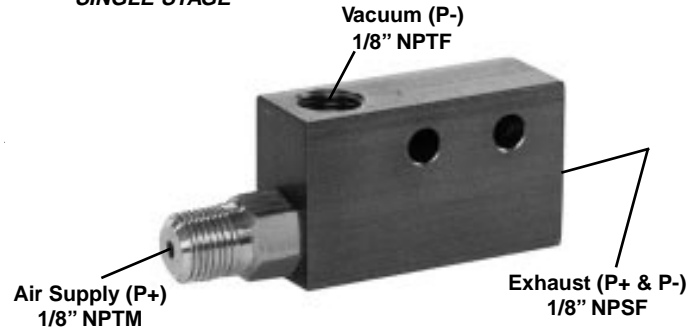
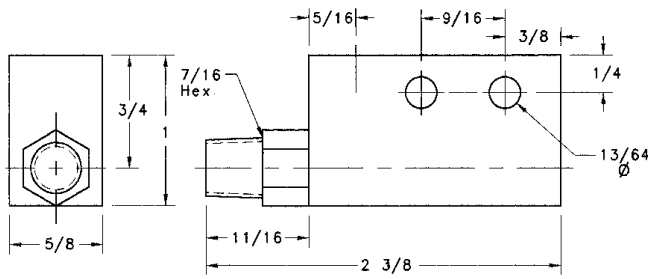


SINGLE STAGE

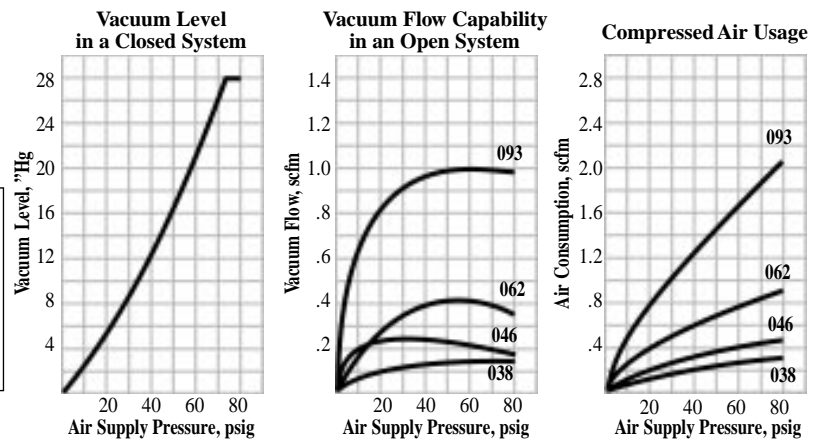


Compact and lightweight, this simple Single Stage pump quickly and efficiently generates vacuum. With no moving parts or seals, it is maintenance free. Air-Vac's most economical series is an excellent choice for small pick and place applications or for evacuating small volumes.

"H" Version

Produces vacuum levels up to 28.0" Hg and vacuum flow rates up to 1.0 scfm.

Model Number	AVR038H	AVR046H	AVR062H	AVR093H
Vacuum Level, "Hg	27.5	27.9	28.0	28.0
Vacuum Flow, scfm	0.16	0.25	0.42	1.0
Air Consumption, scfm	0.31	0.41	0.82	1.9
Weight, oz.	2	2	2	2
Sound Level, dBA	71	72	78	82



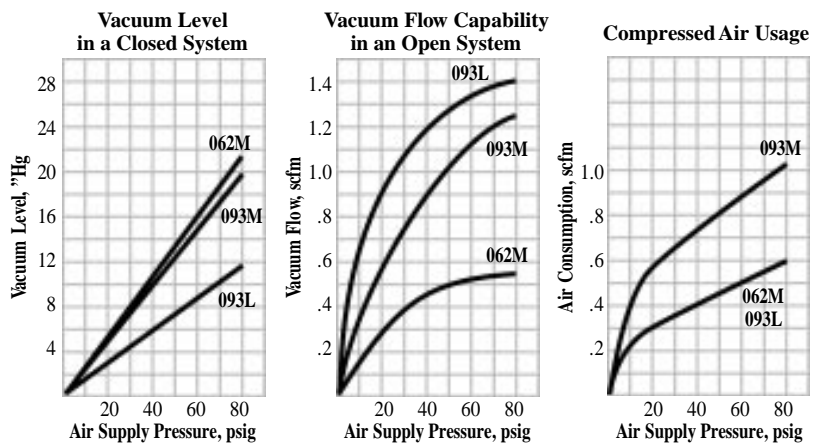
Time in Seconds to Evacuate a Volume of 1 Cubic Foot									
"Hg	1.5	3	6	9	12	15	18	21	24
AVR038H	22	43	98	155	221	302	349	534	720
AVR046H	14	26	56	87	126	172	227	343	414
AVR062H	8.0	15	32	52	75	103	140	190	270
AVR093H	3.0	6.0	13	22	33	47	65	85	114

Vacuum Flow Rate, scfm vs. Vacuum Level, "Hg										
"Hg	0	1.5	3	6	9	12	15	18	21	24
AVR038H	.16	.15	.14	.13	.12	.10	.09	.07	.05	.03
AVR046H	.25	.24	.23	.21	.19	.17	.14	.11	.07	.04
AVR062H	.42	.41	.38	.33	.29	.25	.20	.15	.09	.05
AVR093H	1.0	.92	.87	.74	.66	.55	.50	.37	.30	.16

"M" and "L" Versions

Produce medium and low vacuum levels and vacuum flow rates up to 1.23 scfm, *but with substantially lower levels of air consumption than the "H" versions.*

Model Number	AVR062M	AVR093M	AVR093L
Vacuum Level, "Hg	20.0	18.3	11.0
Vacuum Flow, scfm	0.53	1.23	1.4
Air Consumption, scfm	0.54	1.0	.6
Weight, oz.	2	2	2
Sound Level, dBA	69	72	72

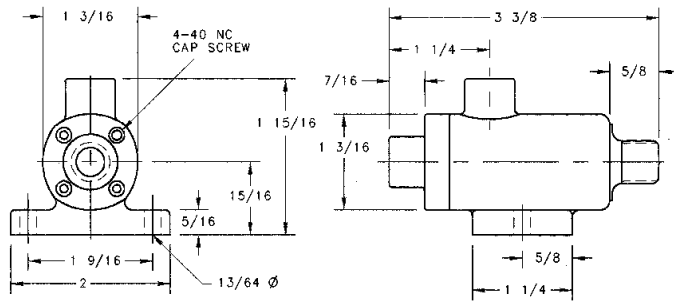


Time in Seconds to Evacuate a Volume of 1 Cubic Foot									
"Hg	1.5	3	6	9	12	15	18		
AVR062M	6.0	11	25	40	61	89	137		
AVR093M	1.9	3.9	8.9	16.5	28.8	56			
AVR093L	1.7	3.7	9.2	22.2					

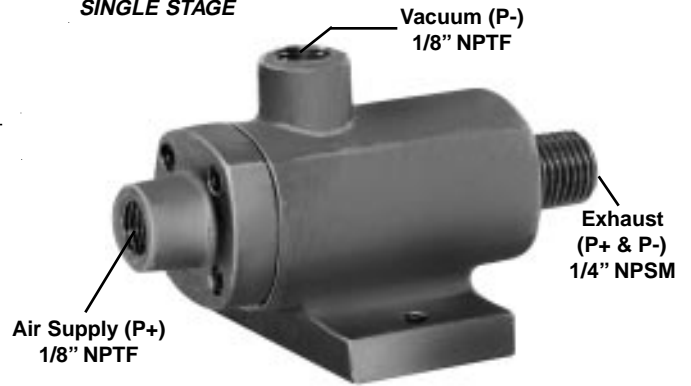
Vacuum Flow Rate, scfm vs. Vacuum Level, "Hg										
"Hg	0	1.5	3	6	9	12	15	18		
AVR062M	.53	.51	.49	.44	.38	.30	.19	.06		
AVR093M	1.23	1.16	1.10	.92	.69	.46	.22			
AVR093L	1.4	1.27	1.13	.75	.40					

• Sound levels recorded with S18 muffler, see page 24.
 • Materials of construction: anodized aluminum and brass - other materials available.

• Operating temperature (degrees): 0 to 400F
 • All data recorded at 70-75 psig air supply.



SINGLE STAGE

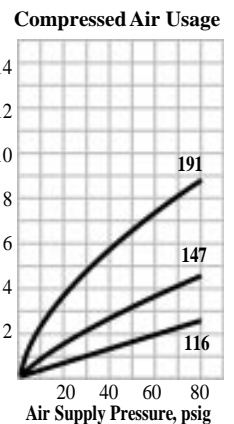
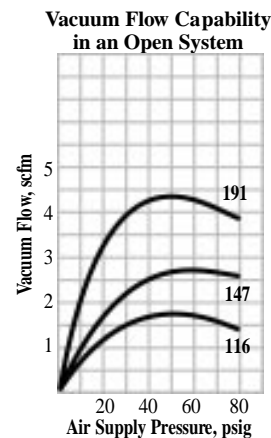
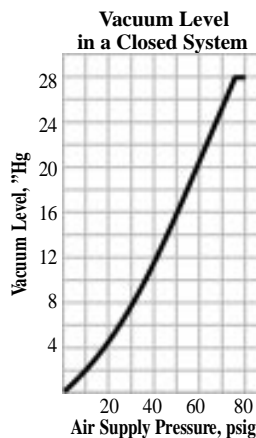


Simple Single Stage design efficiently generates vacuum. Rugged industrial design has no moving parts or seals. Outperforms expensive Multistage pumps in material handling applications operating in 12-18" Hg vacuum range.

"H" Version

Produces vacuum levels up to 28.2" Hg and vacuum flow rates up to 4.3 scfm.

Model Number	AV116H	AV147H	AV191H
Vacuum Level, "Hg	28.0	28.2	28.2
Vacuum Flow, scfm	1.7	2.8	4.3
Air Consumption, scfm	2.7	4.3	8.1
Weight, oz.	6	6	6
Sound Level, dBA	70	72	82



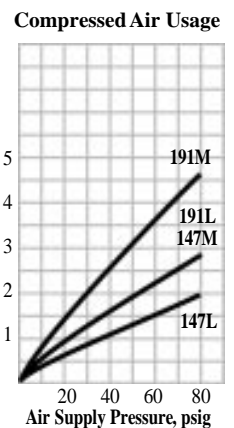
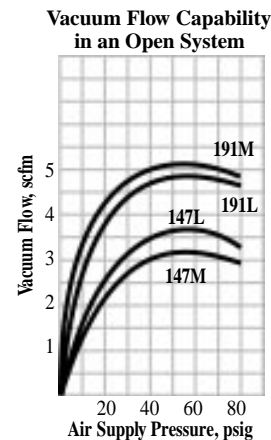
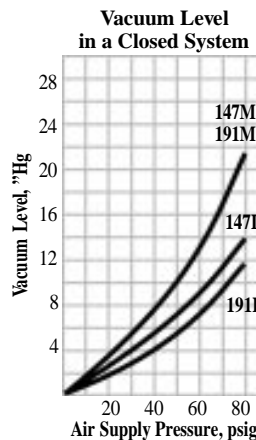
Time in Seconds to Evacuate a Volume of 1 Cubic Foot										
"Hg	1.5	3	6	9	12	15	18	21	24	
AV116H	1.3	3.1	6.7	11.9	19.0	29.8	43	100	134	
AV147H	.7	1.7	4.0	6.6	10.4	15.5	22	32.5	48	
AV191H	.4	1.0	2.4	4.2	6.3	9.3	14.5	20.8	31.5	

Vacuum Flow Rate, scfm vs. Vacuum Level, "Hg										
"Hg	0	1.5	3	6	9	12	15	18	21	24
AV116H	1.7	1.49	1.41	1.21	1.0	.81	.62	.53	.37	.22
AV147H	2.8	2.6	2.37	1.95	1.72	1.39	1.15	.91	.66	.36
AV191H	4.3	4.0	3.63	3.02	2.62	2.33	1.76	1.27	.98	.58

"M" and "L" Versions

Produce medium and low vacuum levels and vacuum flow rates up to 5.2 scfm, *but with substantially lower levels of air consumption than the "H" versions.*

Model Number	AV147M	AV191M	AV147L	AV191L
Vacuum Level, "Hg	18.5	18.0	12.0	10.0
Vacuum Flow, scfm	3.1	5.2	3.6	4.8
Air Consumption, scfm	2.7	4.3	1.8	2.7
Weight, oz.	6	6	6	6
Sound Level, dBA	70	75	69	70



Time in Seconds to Evacuate a Volume of 1 Cubic Foot										
"Hg	1.5	3	6	9	12	15	18			
AV147M	.7	1.5	3.7	6.3	10.3	17.7	41			
AV191M	.3	.7	2.0	3.4	5.5	9.5				
AV147L	.5	1.1	3.0	6.0						
AV191L	.3	.9	2.5	6.4						

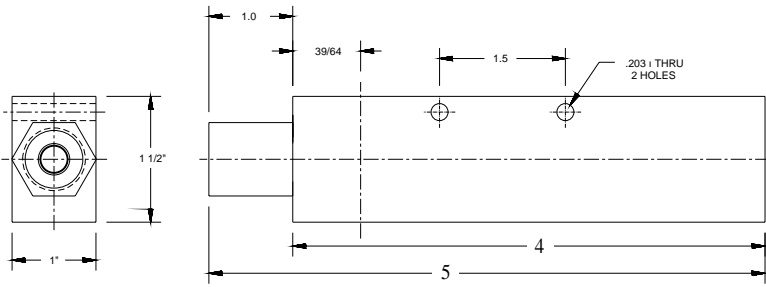
Vacuum Flow Rate, scfm vs. Vacuum Level, "Hg										
"Hg	0	1.5	3	6	9	12	15	18		
AV147M	3.10	2.84	2.73	2.34	1.81	1.31	.73	.19		
AV191M	5.20	4.54	4.10	3.31	2.80	2.08	1.35			
AV147L	3.60	3.24	2.95	2.23	1.20					
AV191L	4.80	4.28	3.58	2.21	.63					

• Sound levels recorded with S147AV muffler, see page 24.
 • Materials of construction: anodized aluminum - other materials available.

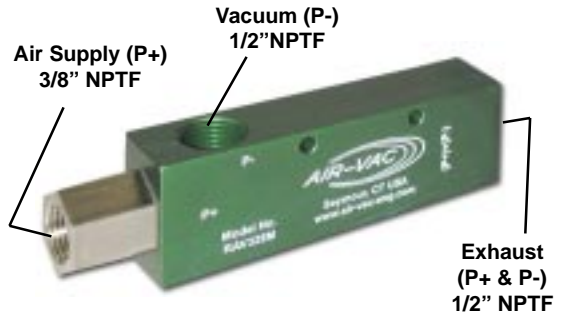
• Operating temperature (degrees): 0 to 400 F
 • All data recorded at 70-75 psig air supply.



RAV SERIES DATA SHEET



SINGLE STAGE

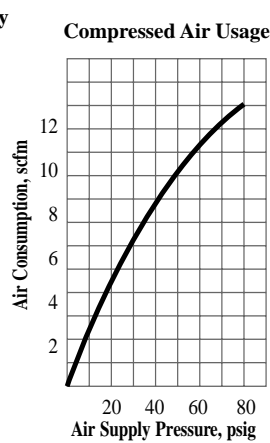
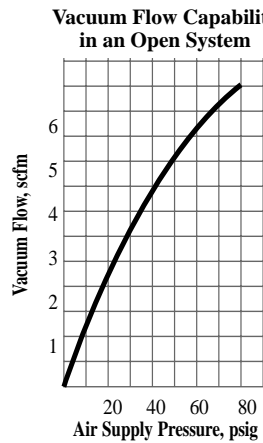
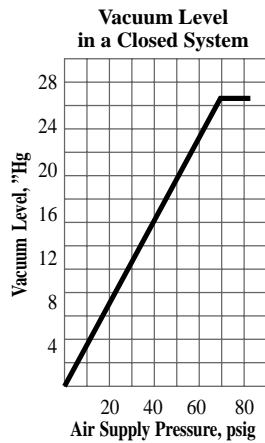


Simple Single Stage design generates vacuum quickly. Two piece construction has no moving parts and no gaskets or seals to wear.

“H” Version

Produces vacuum levels up to 27”Hg and vacuum flow rates up to 7.0 scfm.

Model Number	RAV250H
Vacuum Level, ”Hg	27.0
Vacuum Flow, scfm	7.0
Air Consumption, scfm	12.6
Weight, oz.	11
Sound Level, dBA	80



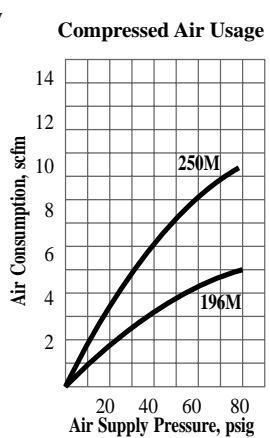
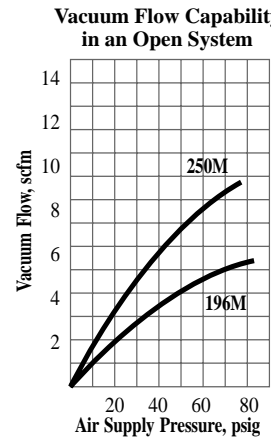
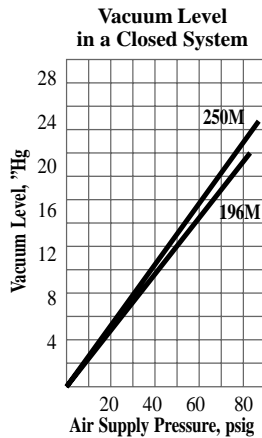
Time in Seconds to Evacuate a Volume of 1 Cubic Foot								
”Hg	3	6	9	12	15	18	21	24
RAV250H	.7	2.0	3.0	4.5	6.7	12	19	41

Vacuum Flow Rate, scfm vs. Vacuum Level, ”Hg									
”Hg	0	3	6	9	12	15	18	21	24
RAV250H	7.0	5.6	4.4	3.9	3.0	1.9	1.1	.6	.2

“M” Version

Produces vacuum levels up to 21.4”Hg and vacuum flow rates up to 8.5 scfm.

Model Number	RAV196M	RAV250M
Vacuum Level, ”Hg	19.6	21.4
Vacuum Flow, scfm	5.3	8.5
Air Consumption, scfm	4.9	9.1
Weight, oz.	11	11
Sound Level, dBA	70	74

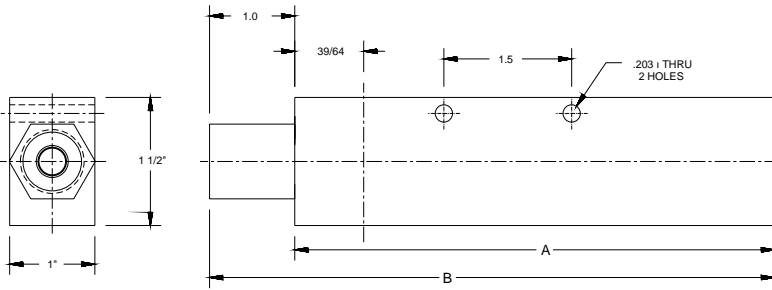


Time in Seconds to Evacuate a Volume of 1 Cubic Foot							
”Hg	3	6	9	12	15	18	
RAV196M	.60	2.0	4.1	4.9	7.2	17.0	
RAV250M	.50	1.0	1.5	4.0	5.0	11.2	

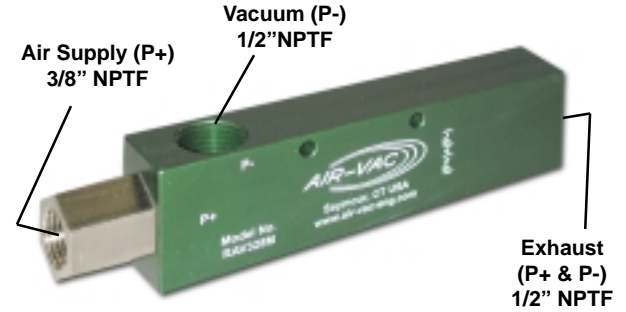
Vacuum Flow Rate, scfm vs. Vacuum Level, ”Hg								
”Hg	0	3	6	9	12	15	18	
RAV196M	5.3	5.2	4.8	4.2	3.4	2.2	0.7	
RAV250M	8.5	7.6	6.3	5.0	4.7	3.2	1.4	

• Materials of construction: anodized aluminum - other materials available.
 • Operating temperature (degrees): 0 to 400 F

• All data recorded at 75 psig air supply.



SINGLE STAGE



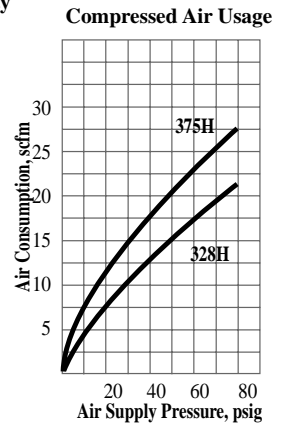
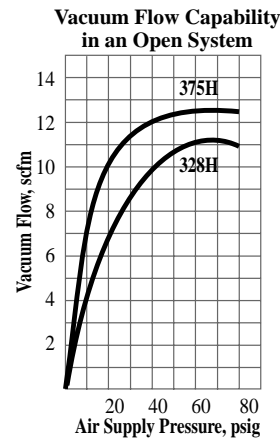
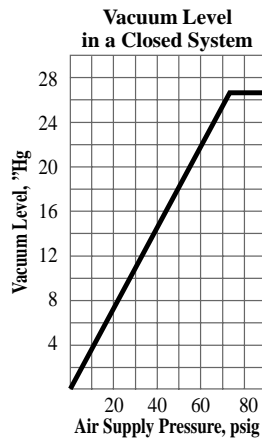
PUMP	A	B
RAV328H	5 5/8	6 5/8
RAV375H	5 5/8	6 5/8

Simple Single Stage design generates vacuum quickly. Two piece construction has no moving parts and no gaskets or seals to wear. Air supply nozzle can be removed if cleanout is ever necessary.

"H" Version

Produces vacuum levels up to 27" Hg and vacuum flow rates up to 12.5 scfm.

Model Number	RAV328H	RAV375H
Operating Pressure, psig	75	75
Vacuum Level, "Hg	27.0	27.0
Vacuum Flow, scfm	11.1	12.5
Air Consumption, scfm	18.9	26.5
Weight, oz.	14	14
Sound Level, dBA	79	82



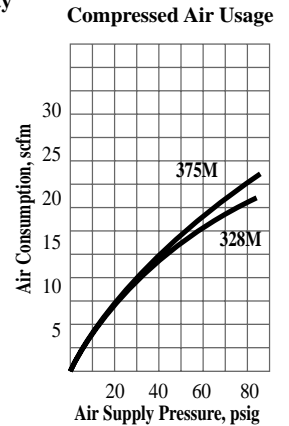
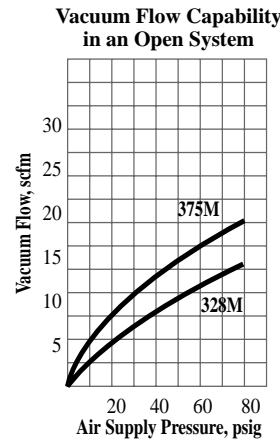
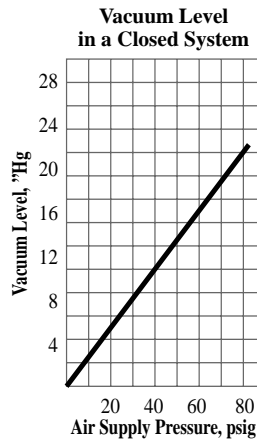
Time in Seconds to Evacuate a Volume of 1 Cubic Foot								
"Hg	3	6	9	12	15	18	21	24
RAV328H	0.6	1.2	1.9	2.9	4.2	5.9	8.5	14.5
RAV375H	0.4	0.9	1.5	2.0	3.1	5.0	7.0	11.5

Vacuum Flow Rate, scfm vs. Vacuum Level, "Hg									
"Hg	0	3	6	9	12	15	18	21	24
RAV328H	11.1	10.2	9.1	7.8	7.0	6.0	5.3	4.6	2.2
RAV375H	12.5	11.8	11.1	9.9	8.8	7.4	6.0	4.8	2.4

"M" Version

Produces vacuum levels up to 23.8" Hg and vacuum flow rates up to 19.9 scfm.

Model Number	RAV328M	RAV375M
Operating Pressure, psig	75	75
Vacuum Level, "Hg	21.0	21.0
Vacuum Flow, scfm	14.8	18.2
Air Consumption, scfm	18.0	20.5
Weight, oz.	14	14
Sound Level, dBA	73	78



Time in Seconds to Evacuate a Volume of 1 Cubic Foot							
"Hg	3	6	9	12	15	18	
RAV328M	0.3	.90	1.5	1.9	3.1	4.4	
RAV375M	0.2	.60	1.0	1.6	2.8	4.3	

Vacuum Flow Rate, scfm vs. Vacuum Level, "Hg								
"Hg	0	3	6	9	12	15	18	
RAV328M	15.1	14.1	13.2	11.9	10.5	9.1	7.1	
RAV375M	19.9	18.6	16.8	14.6	11.3	7.7	6.4	

• Sound levels recorded with S375 mufflers, see page 26.
 • Operating temperature: 0° to 400°F

• All data recorded at 75 psig air supply.
 • Materials of construction: anodized aluminum body, nickel plated brass nozzle.